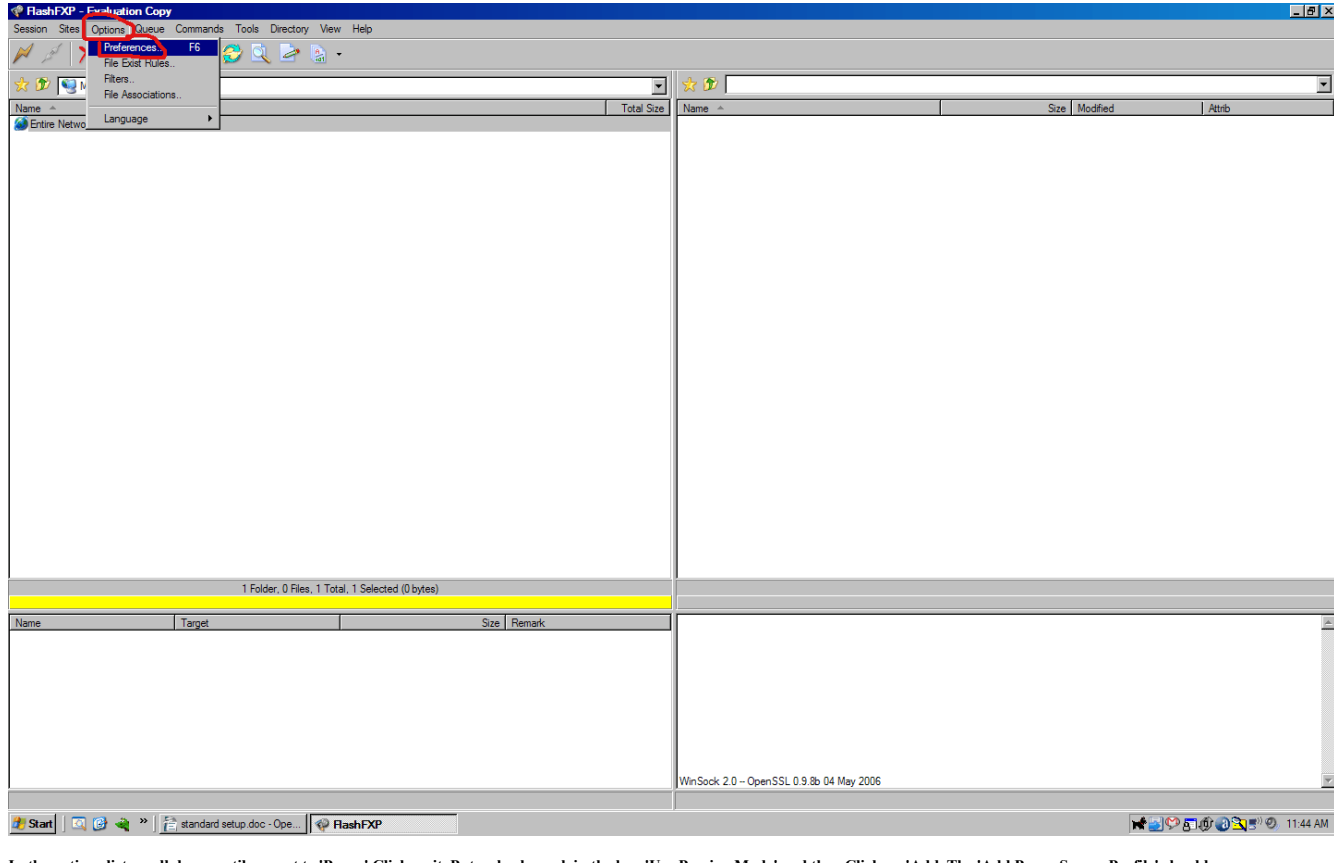
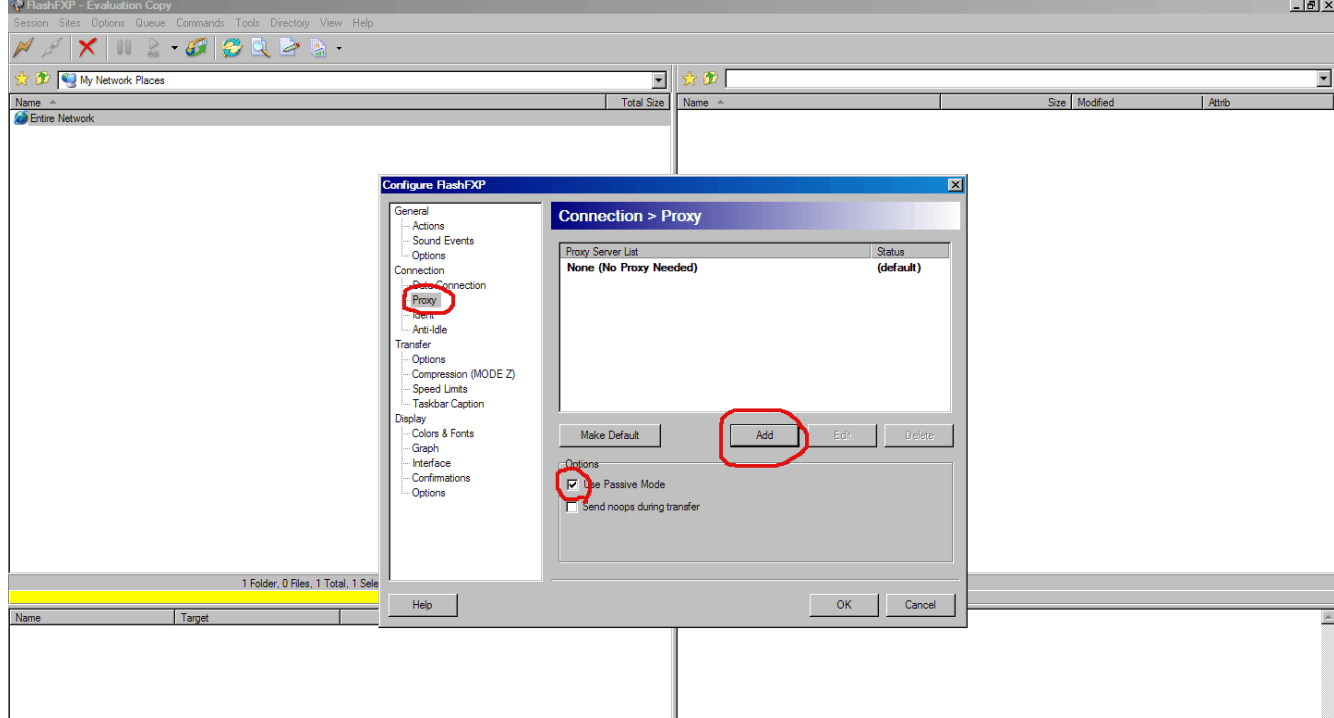


This guide will show you how to configure FlashFXP to use HTTP-Tunnel. **HTTP-Tunnel does not provide technical support for this product.** This guide will only show how to configure proxy settings and to connect to FTP.

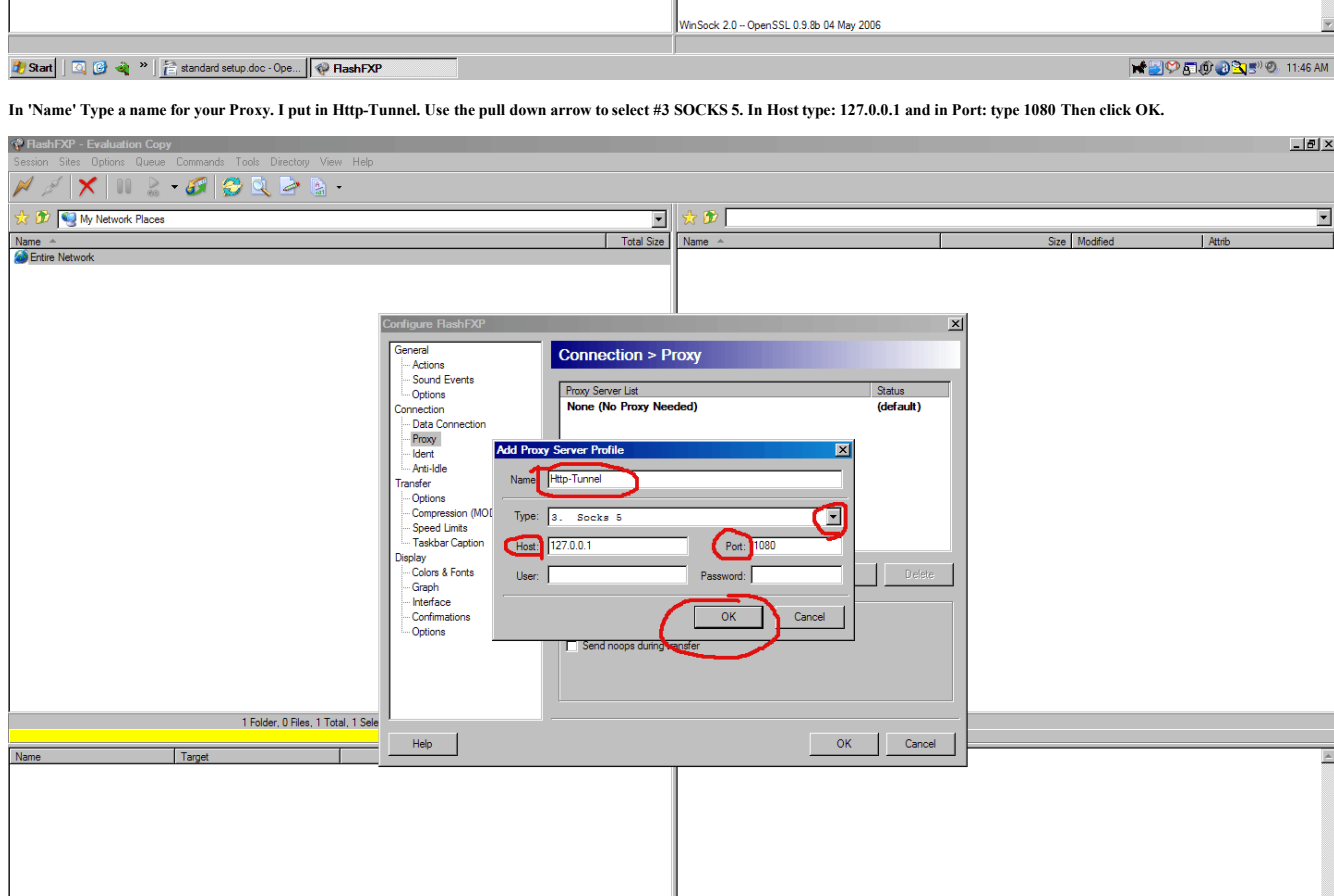
Open FlashFXP. On the Menu bar select 'Options' and click on it. A pull down list appears, scroll down and select 'Preferences' and click on it. The Configure FlashFXP windows should appear.



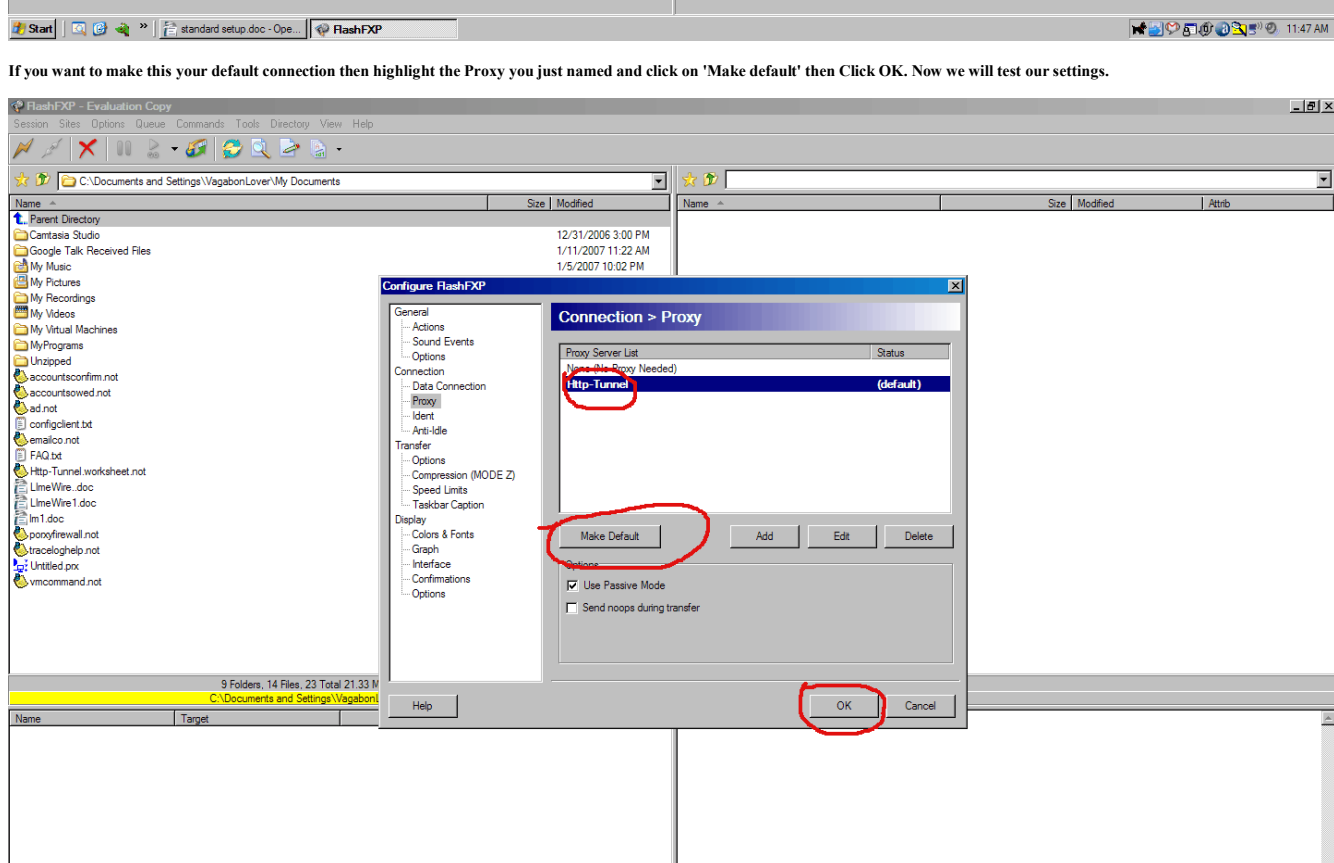
In the options list scroll down until you get to 'Proxy' Click on it. Put a check mark in the box 'Use Passive Mode' and then Click on 'Add. The 'Add Proxy Server Profile' should appear



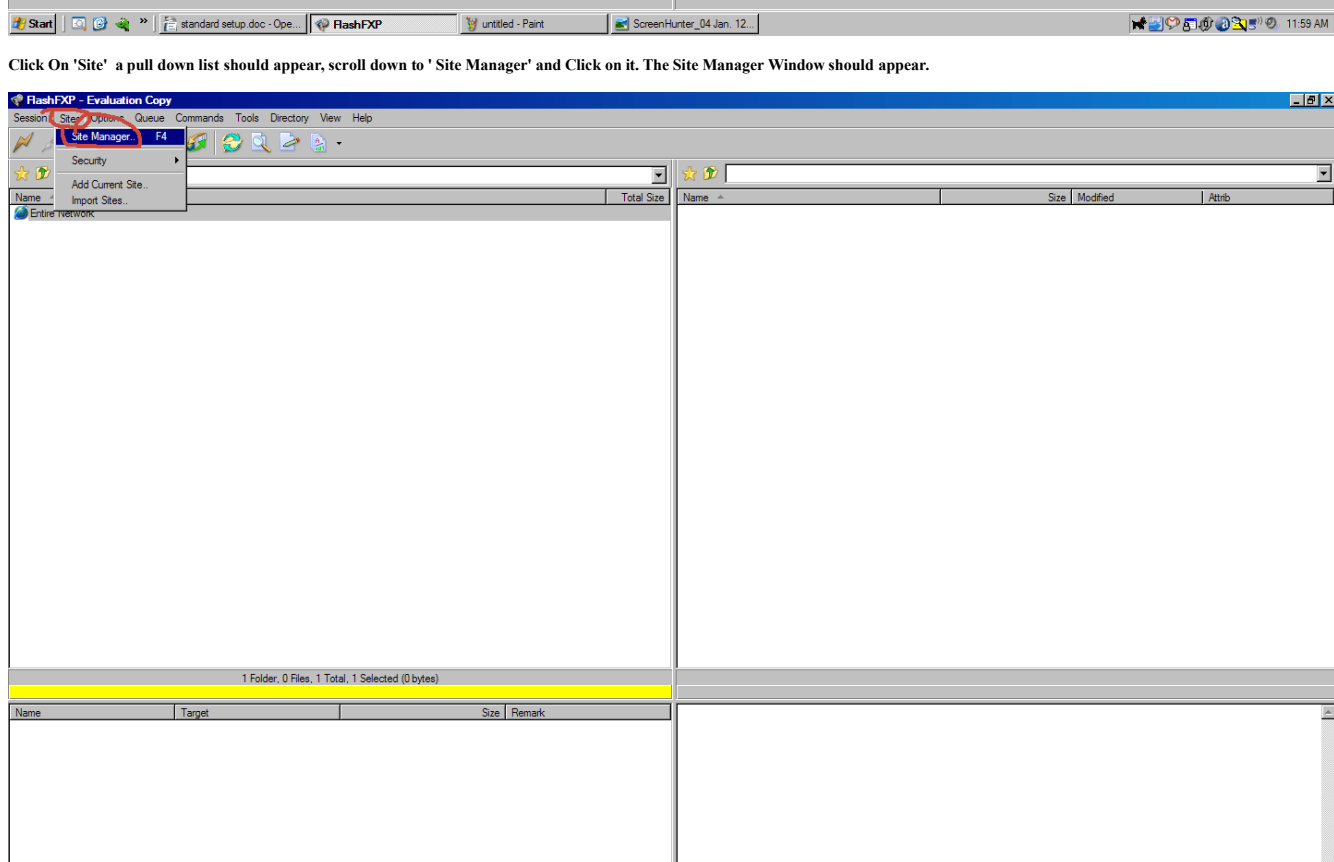
In 'Name' Type a name for your Proxy. I put in Http-Tunnel. Use the pull down arrow to select #3 SOCKS 5. In Host type: 127.0.0.1 and in Port: type 1080 Then click OK.



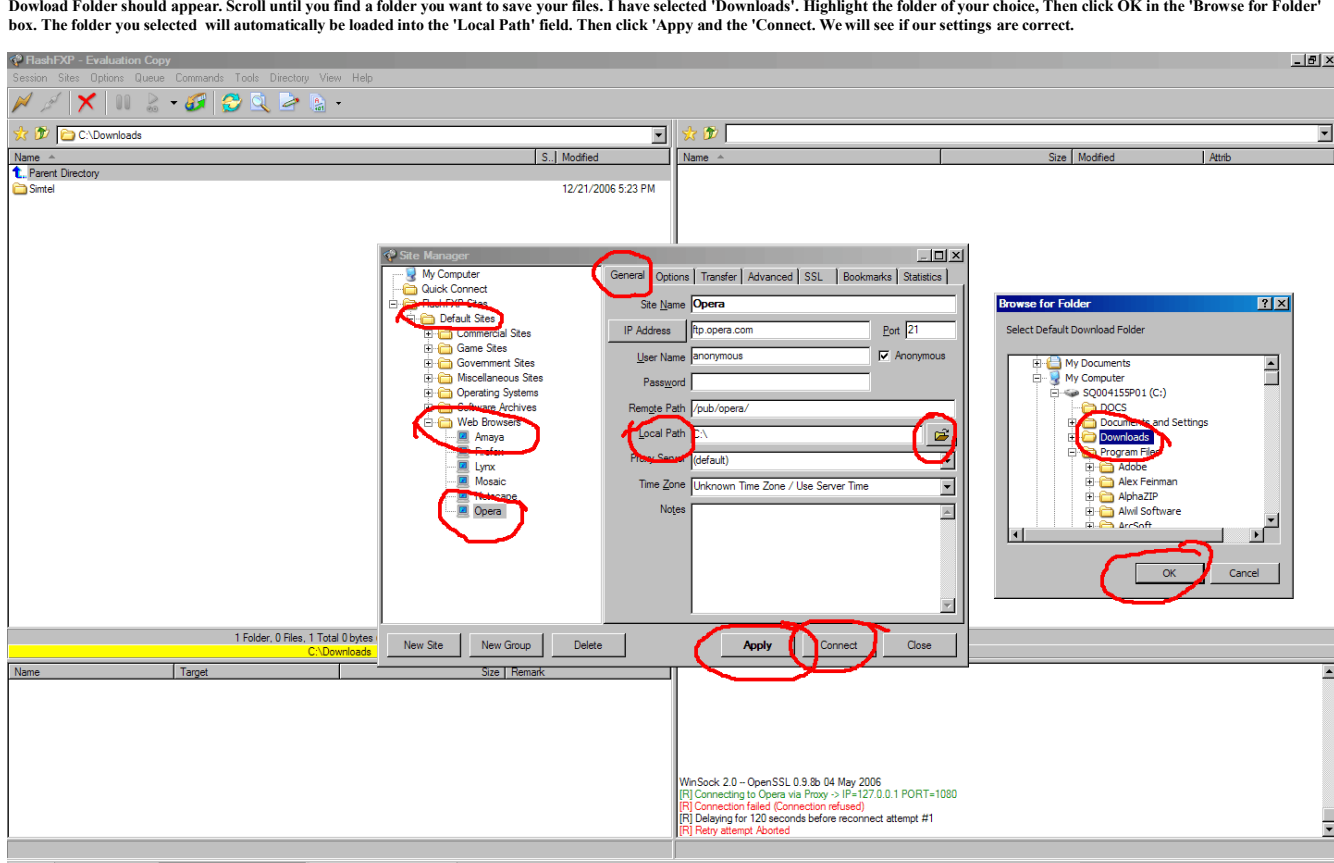
If you want to make this your default connection then highlight the Proxy you just named and click on 'Make default' then Click OK. Now we will test our settings.



Click on 'Site' a pull down list should appear, scroll down to 'Site Manager' and Click on it. The Site Manager Window should appear.



Here I will just pick a random site to test my settings: Click on the 'General' tab then click on 'Default Sites' scroll down to 'Web Servers' click that and then scroll down and click on 'Opera' Leave all settings in the default position, except I will need a place to save your files. Go to the 'Local Path' field and on the right click on the 'folder icon'. The Browse for Folder and Select Default Download Folder should appear. Scroll until you find a folder you want to save your files. I have selected 'Downloads'. Highlight the folder of your choice. Then click OK in the 'Browse for Folder' box. The folder you selected will automatically be loaded into the 'Local Path' field. Then click 'Apply' and the 'Connect'. We will see if our settings are correct.



This shows that the proxy settings are correct and FlashFXP is successfully using HTTP-Tunnel.

