



- [FAQ](#)
- [Search](#)
- [Memberlist](#)
- [Usergroups](#)
- [Register](#)
- [Profile](#)
- [Log in to check your private messages](#)
- [Log in](#)

MailWasher



[HTTP-Tunnel.com Forum Index -> Documentation](#)

[View previous topic](#) :: [View next topic](#)

Author	Message
--------	---------

SuitedScooter
Official Beta Tester

Joined: 28 Jul 2005
Posts: 79

Posted: Fri Aug 26, 2005 11:20 am Post subject: MailWasher



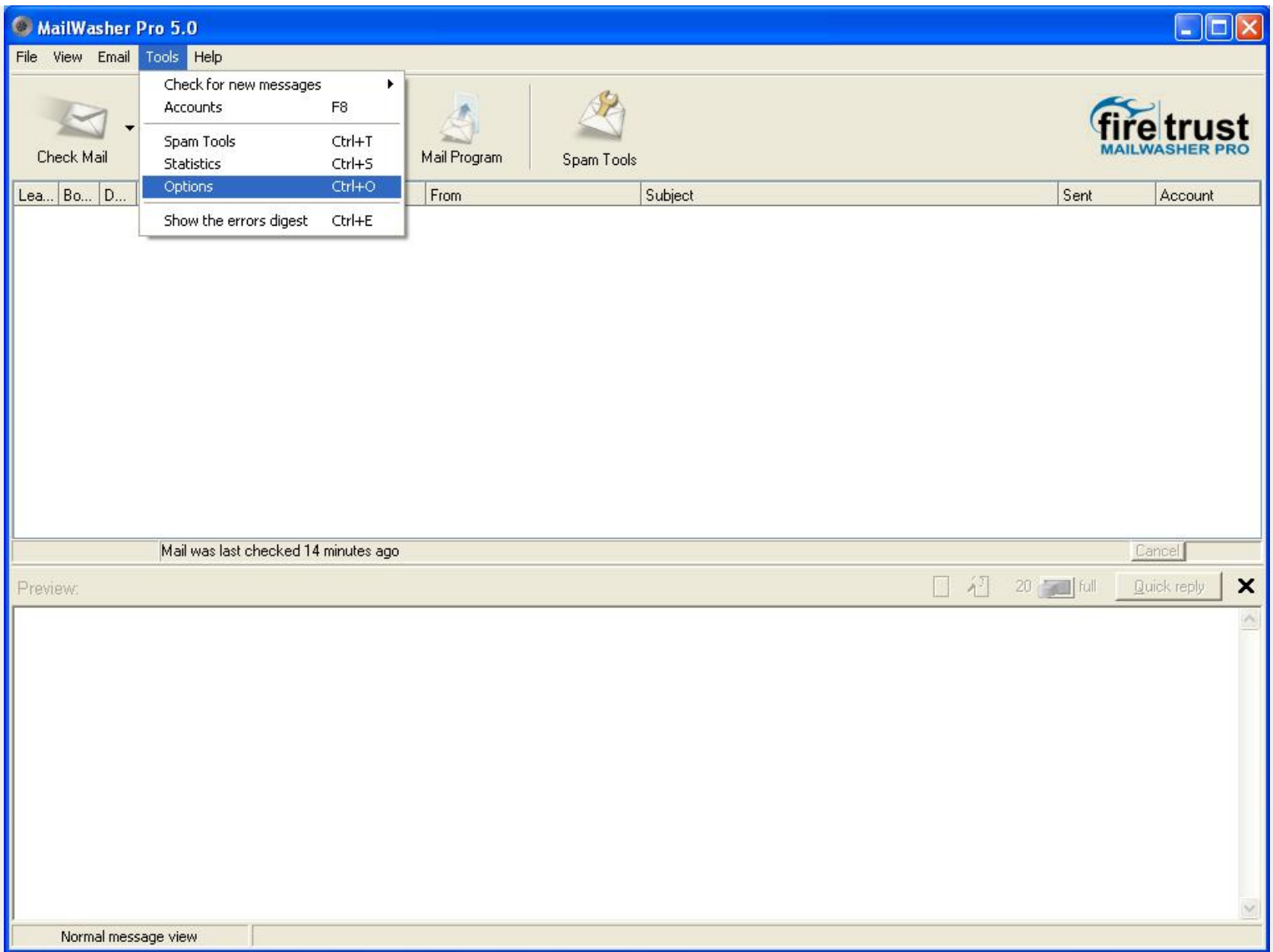
MailWasher Pro

View email on the mail-server before it gets to your computer.
 Stop spam, viruses and phishing emails so they never get to your inbox.
 Save time by only getting the mail you want.
 Bounce mail back to the sender with a genuine "Unknown User" e-mail.
 Dynamic antispam filter updates so you always have the latest spam fighting technology

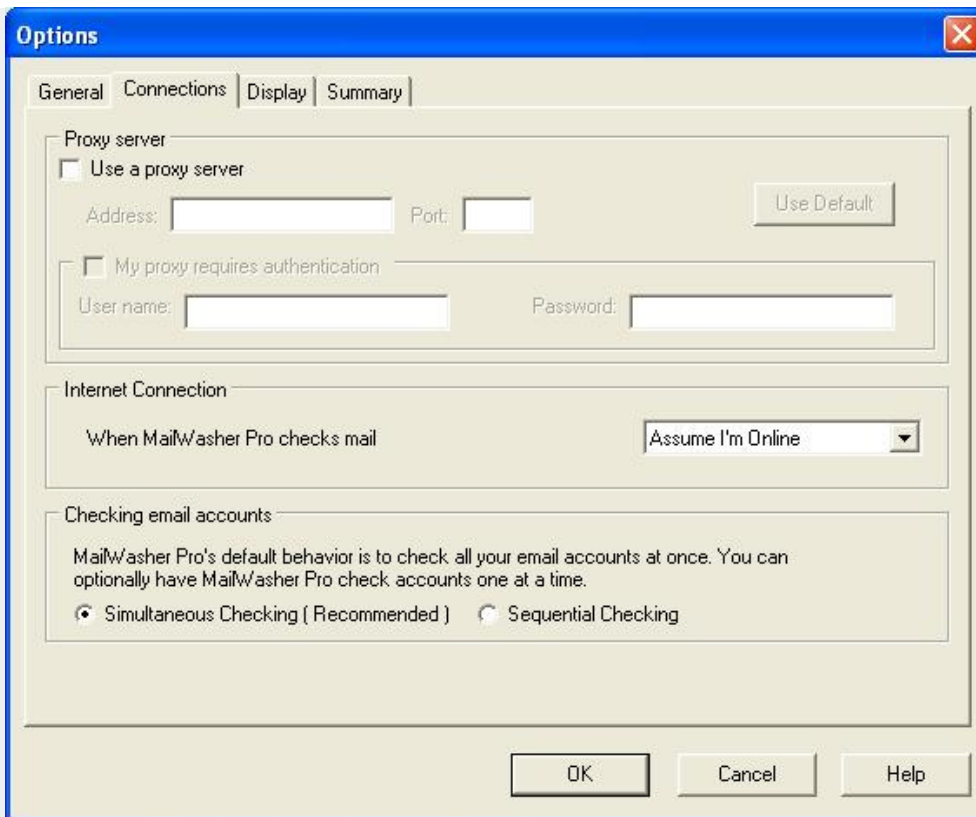
A free (much older) version which happens to have some additional features, can be found at <http://www.dsreports.com/r0/download/317579~cdeb03c3d1d63ff9fce472f8afe2bc1c/mailwasher2b28.zip>

Guide

1. Open MailWasher
2. Select Tools > Options from the toolbar



3. Select the Connections tab



The screenshot shows the 'Options' dialog box for MailWasher, with the 'Connections' tab selected. The 'Proxy server' section is expanded, showing the 'Use a proxy server' checkbox checked. The 'Address' field contains 'localhost' and the 'Port' field contains '1080'. The 'My proxy requires authentication' checkbox is unchecked. The 'Internet Connection' section shows 'When MailWasher Pro checks mail' set to 'Assume I'm Online'. The 'Checking email accounts' section shows 'Simultaneous Checking (Recommended)' selected.

Options

General | **Connections** | Display | Summary

Proxy server

Use a proxy server

Address: Port:

My proxy requires authentication

User name: Password:

Internet Connection

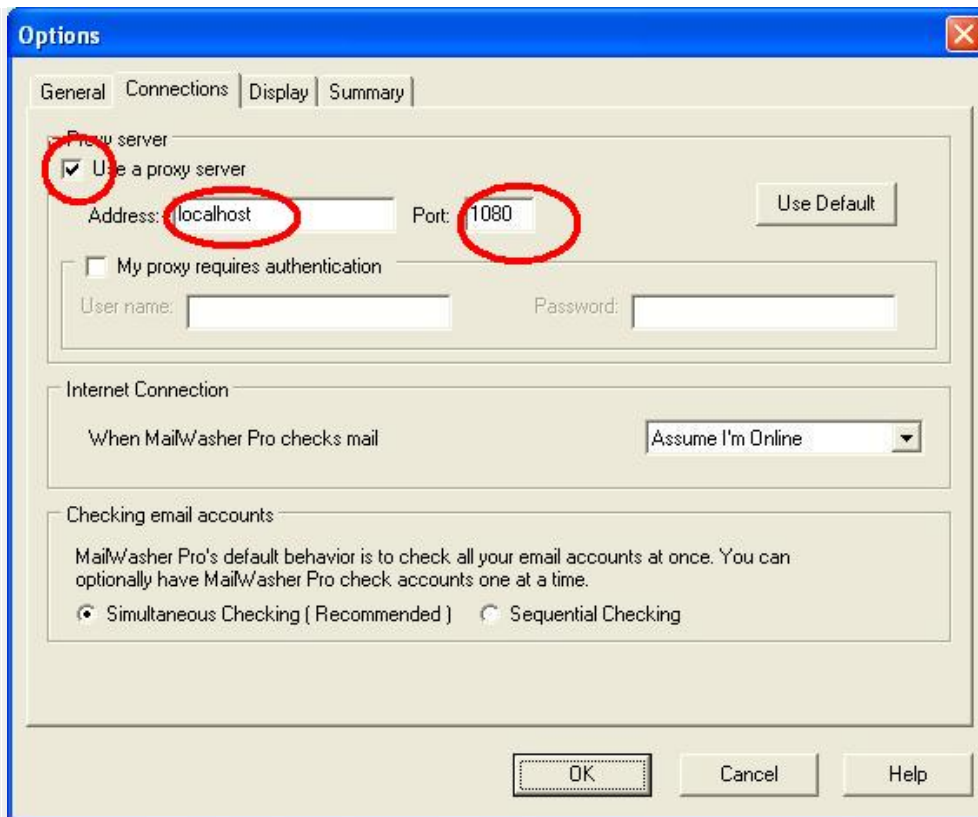
When MailWasher Pro checks mail

Checking email accounts

MailWasher Pro's default behavior is to check all your email accounts at once. You can optionally have MailWasher Pro check accounts one at a time.

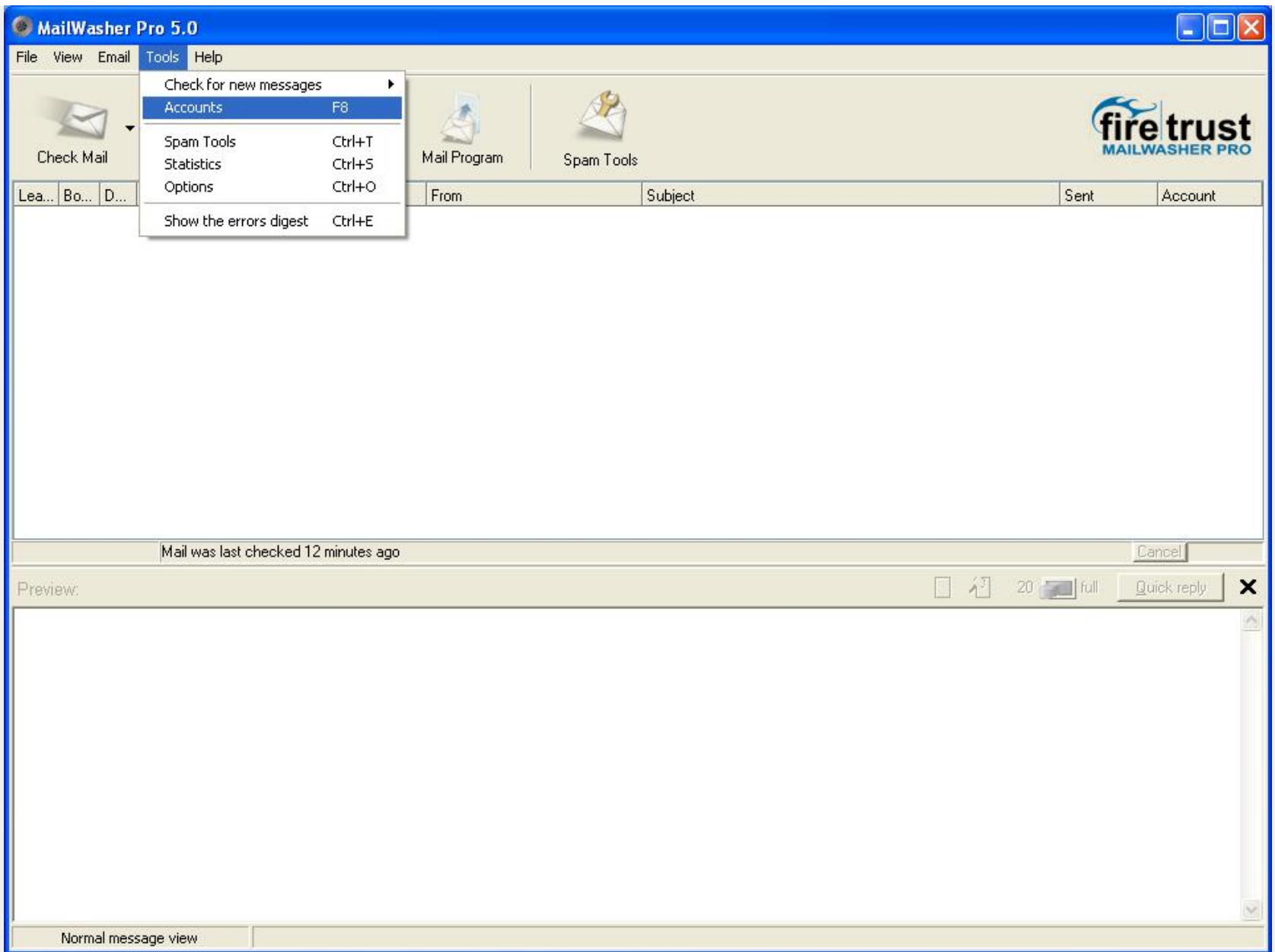
Simultaneous Checking (Recommended) Sequential Checking

4. Select "Use a Proxy Server"
5. Type localhost in the Address field
6. Type 1080 into the Port field

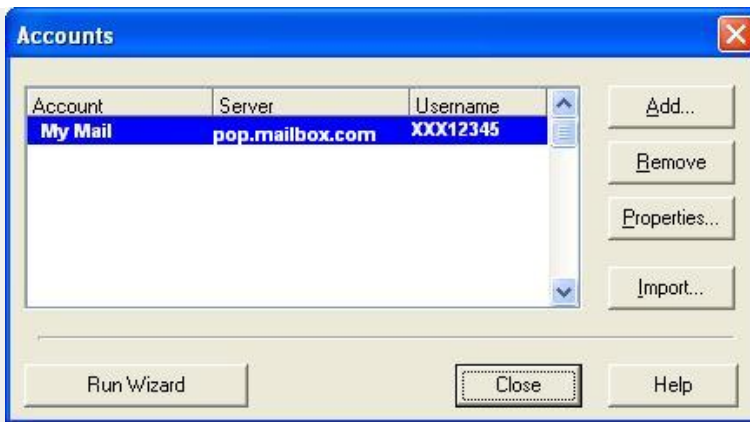


7. And click OK to return to MailWasher

8. Next, choose Tools > Accounts



9. Highlight the account, and click Properties.



10. Change the POP3 server address to 127.0.0.1



11. Click OK to return to MailWasher.

12. Open HTTP-Tunnel

13. Open Settings Menu

14. select Add Ports/Applications

Destination IP	Destination Port	Local Port

Destination

Application Port: 110 Local Port: 110 Protocol: TCP

Address or IP: pop.mailbox.com

Add OK

15. Enter your mailbox's incoming mail port (usually 110 for POP3)
16. Enter your incoming mail server
17. Click Add

Destination IP	Destination Port	Local Port

Destination

Application Port: 110 Local Port: 110 Protocol: TCP

Address or IP: pop.mailbox.com

Add OK

18. Enter your mailbox's outgoing mail port (usually port 25 for SMTP)
19. Enter your outgoing mail server
20. Click Add

Add Applications/Ports ✖

Destination IP	Destination Port	Local Port

Destination

Application Port	Local Port	Protocol	
<input type="text" value="110"/>	<input type="text" value="110"/>	<input type="text" value="TCP"/>	<input type="button" value="Add"/>
Address or IP			<input type="button" value="OK"/>
<input type="text" value="pop.mailbox.com"/>			

21. Click OK to close the Add Applications/Ports screen

[Back to top](#)

 [profile](#)
 [pm](#)

Display posts from previous:



[HTTP-Tunnel.com Forum Index](#) -> [Documentation](#)

All times are GMT

Page 1 of 1

Jump to:
 You **can** post new topics in this forum
 You **can** reply to topics in this forum
 You **cannot** edit your posts in this forum
 You **cannot** delete your posts in this forum
 You **cannot** vote in polls in this forum

Powered by [phpBB](#) © 2001, 2005 phpBB Group