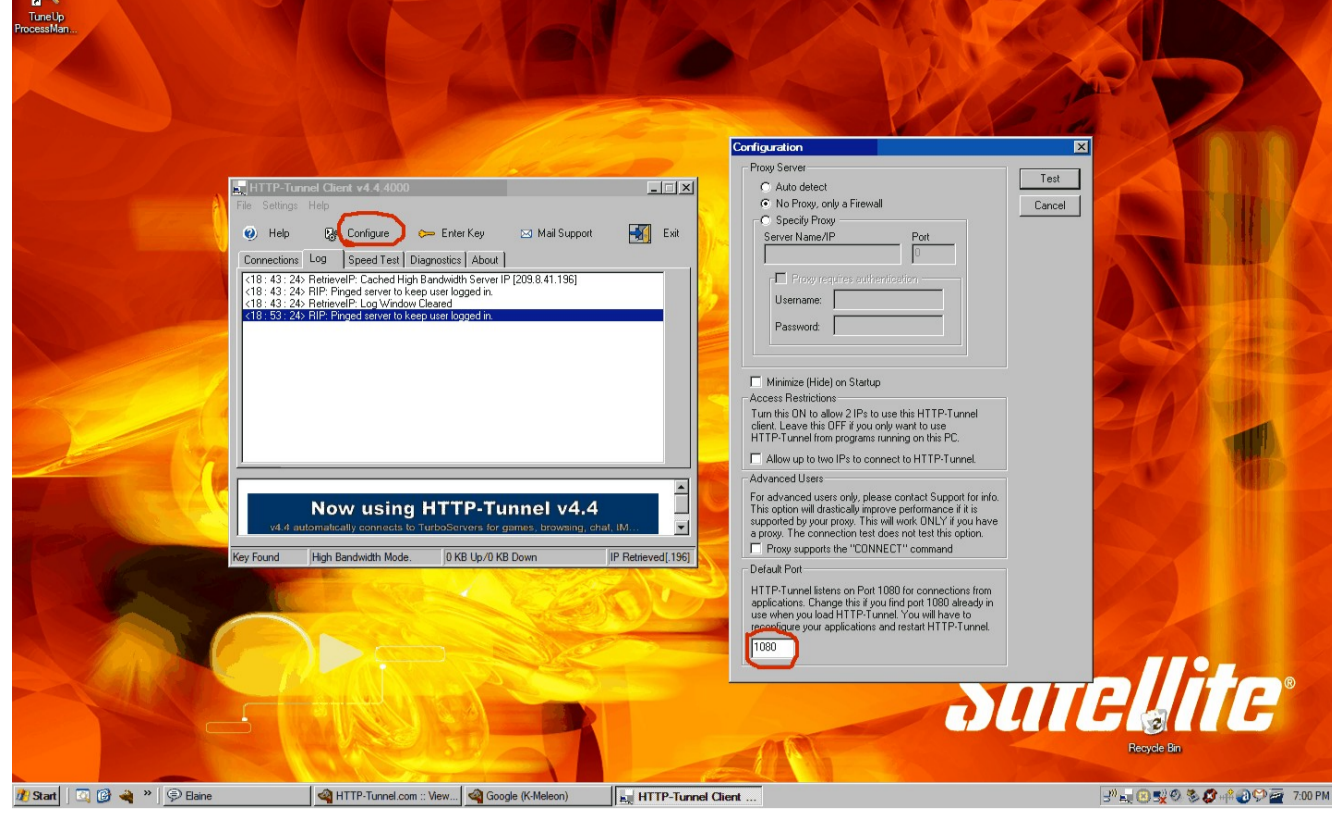


This guide will show you how to configure Skype to use Http-Tunnel.

Once you have Http-Tunnel installed, run the application, The main window will appear, choose the configure option. There you will be presented with three (3) options.

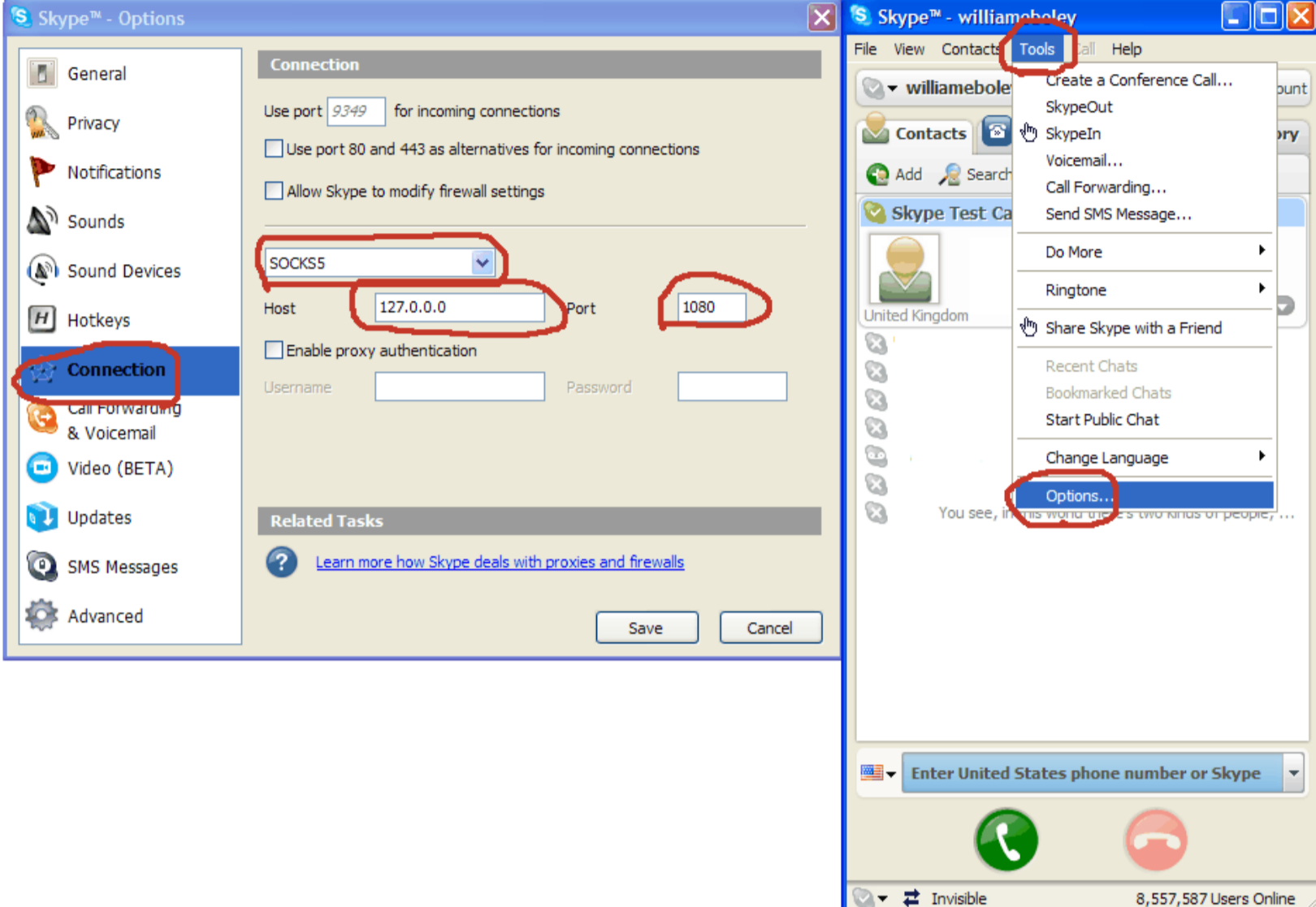
1. You can Select Auto detect if you want Http-Tunnel to detect your settings.
2. No Proxy, only a firewall if this is appropriate.
3. Specify Proxy, Here you will enter the IP address and Port number of the proxy that you use.

Complete 1 of the 3 options, then click test, the client will bind to port 1080 and localhost by default and connect to the tunnel servers if your settings are correct.



I have used Skype for years. Before the advent of Google Talk it was my primary Instant Messenger. I find it to be superior to Yahoo, MSM, AIM and a host of other IM's. The reason being the aforementioned IM's have acquiesced to many countries and organizations to limit the options of the ordinary user. Skype came along with the stated intention of " Connecting The World " and for the most part it does that.

Open Skype's main window. On the menu bar select Tools and ' Click ' it . Scroll down to Options and ' Click ' it. The Skype options window should open. In the menu window on the left scroll down to Connection and ' Click ' it. The connection interface should appear. Use the pull down arrow to select your protocol either HTTPS or SOCKS. Experimenting with these 2 settings may help determine which will work best for you. Then in the Host field enter: 127.0.0.1 and in Port enter: 1080 . These settings will take effect after you restart Skype. ' Click ' Save and then exit and restart Skype.



After you have restarted Skype give it a few minutes to connect. Skype is very aggressive. It prefers to connect on its' own terms. Skype doesn't like constraints set by other applications or administrative settings and seeks to circumvent these but connect it will! After making connection you can test the voice quality by using the Skype Test Call feature. The connection is usually stable, clear and with minimal latency. I have been able to use my web cam with this configuration from behind more than a few firewalls with varying degrees of success.

