



## eMule Guide



[HTTP-Tunnel.com Forum Index -> Documentation](#)

[View previous topic](#) :: [View next topic](#)

Author	Message
--------	---------

**bluethought**  
Site Admin

Joined: 25 Jun 2005  
Posts: 2113

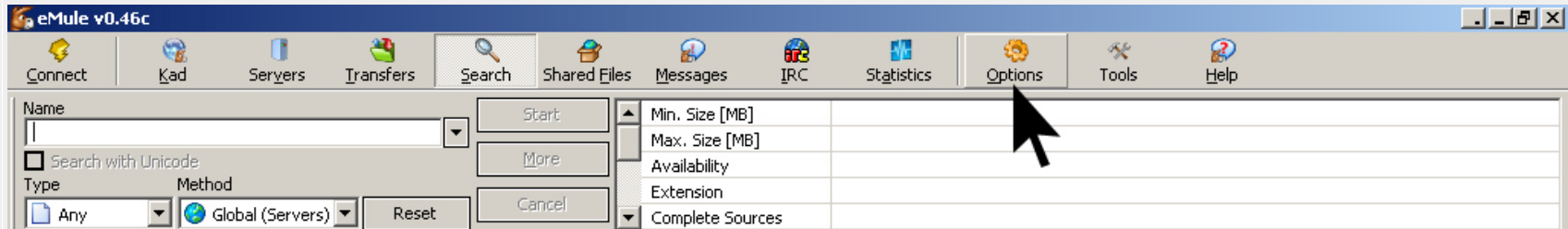
Posted: Sat Aug 20, 2005 5:19 pm Post subject: eMule Guide



Thanks to john70smith 😊

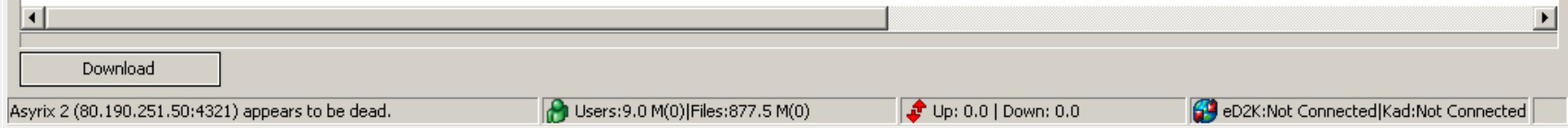
### Guide to eMule

1. Open eMule.
2. Click on the Options button to open the dialog box.

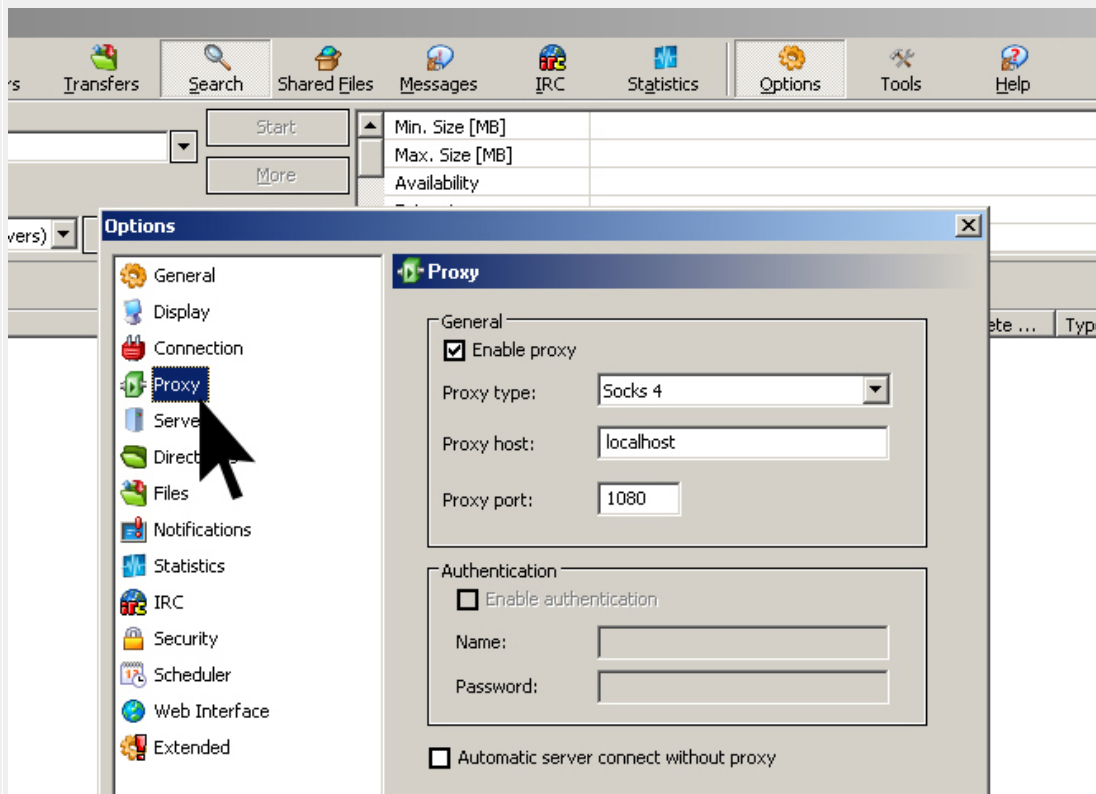


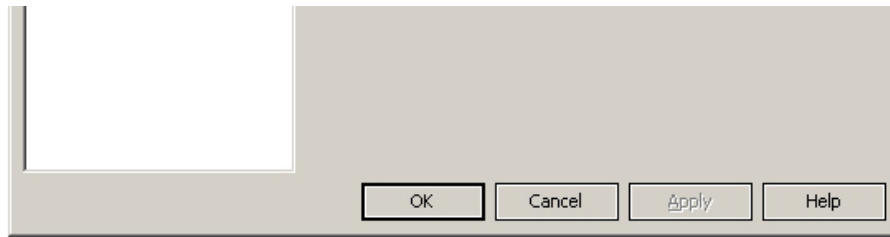
Search Results

File Name	Size	Availa...	Complete ...	Type	Length	Bitrate



3. Click on Proxy to bring up the Proxy Tab.
4. Select "Enable Proxy".
5. Select Socks 4 or 5 as Proxy type.
6. In the Proxy Host box, enter localhost.
7. In the Proxy Port box, enter 1080.





s to be dead. Users:9.0 M(0)|Files:877.5 M(0) Up: 0.0 | Down: 0.0 eD2K:Not C

8. Click on OK to close the Options dialog box.

9. Close eMule.

10. Open HTTP-Tunnel.

11. Restart eMule and connect to the server of your choice.

Note by bluethought: Performance with eMule will not be very good since we still don't have support for UDP or HighID. You can only use eMule with LowID, and won't be able to connect to KAD.

[Back to top](#)



**bluethought**  
Site Admin

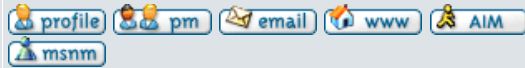
Posted: Sat Dec 31, 2005 9:20 pm Post subject:



Joined: 25 Jun 2005  
Posts: 2113

Update: Performance with eMule is reasonable if you queue downloads and wait 20-24 hrs+. Allows you to download a gigabyte a day or more.

[Back to top](#)



Display posts from previous:



[HTTP-Tunnel.com Forum Index](#) -> [Documentation](#)

All times are GMT

Page 1 of 1

Jump to:  
 You **can** post new topics in this forum  
 You **can** reply to topics in this forum  
 You **cannot** edit your posts in this forum  
 You **cannot** delete your posts in this forum  
 You **cannot** vote in polls in this forum